



## Network Cable Copper

**LinkIT F/UTP Slim Cat.6a Blue 0.5m**  
AWG 28/1 | LSZH | Snagless | 4.7mm

Product number: SFTPC6A-0050M-BL

## Product Description

LinkIT Patch Cat.6a cables stand out with their impressive 50-micron gold plating, providing exceptional corrosion protection and optimal signal transmission. Another important feature is support for the PoE++ (Power over Ethernet++) standard, enabling robust power delivery over network cables. This makes the device ideal for power-hungry applications such as cameras, access points, and other devices that require extra power.

The modular plug is equipped with a tangle-free lock that prevents annoying cable tangles and ensures a seamless connection experience. The cable comes with a high-quality clear plug, providing extra strength and protection to the cable ends and ensuring durability and reliability, even in demanding environments.

The cable's performance meets the requirements for Cat.6a (ANSI/TIA-568-C.2 and ISO 11801).

## Main Specifications

<b>Brand</b>	LinkIT
<b>Color</b>	Blue
<b>Length (m)</b>	0,5
<b>Category</b>	Cat.6a Slim
<b>Connector type 1</b>	RJ-45 male (8P8C)
<b>Connector type 2</b>	RJ-45 male (8P8C)
<b>Conductor material</b>	Copper
<b>Cable shielding</b>	F/UTP - foiled shielding/unshielded twisted pairs
<b>Conductor design</b>	Solid



## Extended Specifications

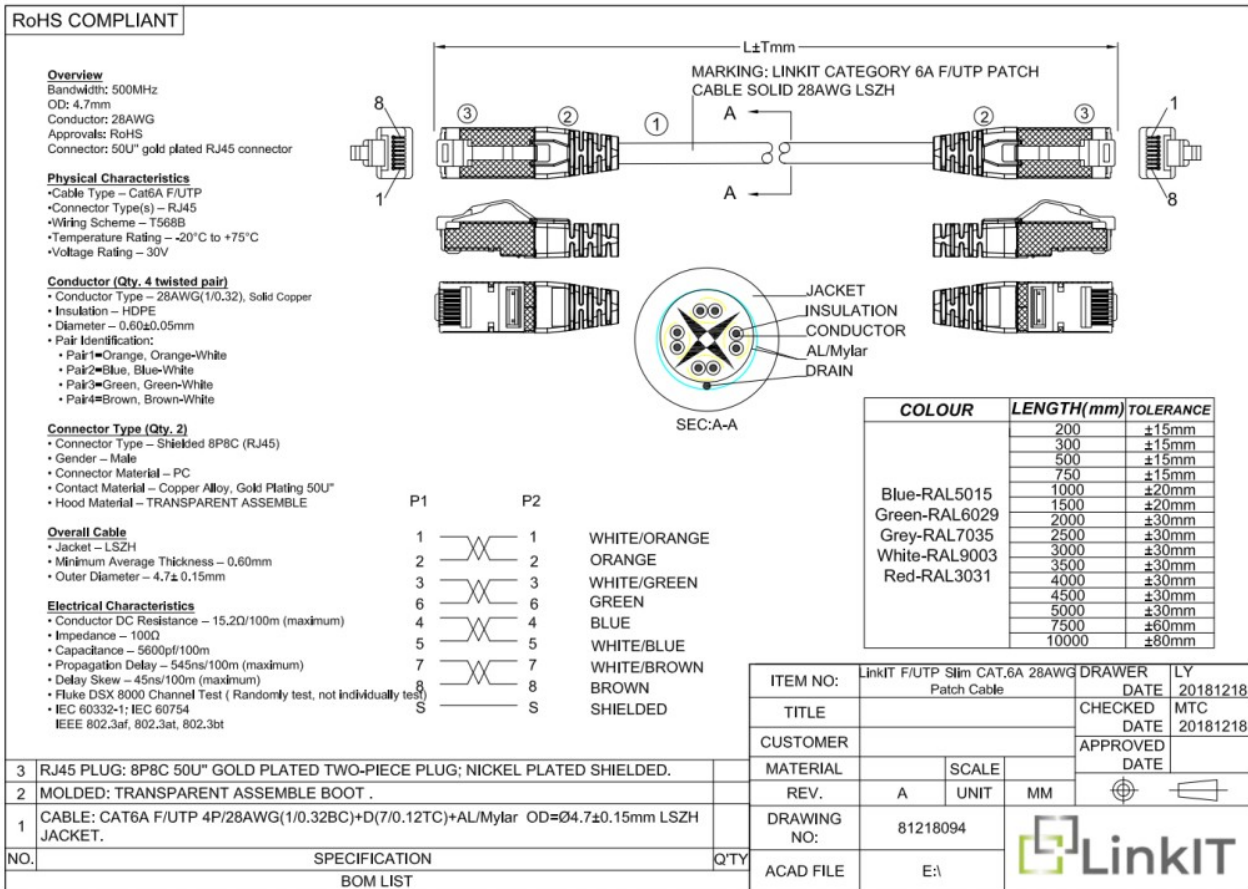
<b>AWG wire size</b>	28
<b>Transmission speed</b>	10Gbps
<b>Frequency (Mhz)</b>	500
<b>Cable structure</b>	4 x 2 AWG 28/1 (Solid)
<b>Locking type</b>	Snagless
<b>NVP value</b>	69%
<b>Jacket material</b>	LSZH
<b>Anti-kink sleeve</b>	Assembled
<b>Pin Assignment</b>	1-2;3-6;4-5;7-8
<b>Cable Diameter (mm)</b>	4.7
<b>Halogenfree</b>	✓
<b>Oil resistant</b>	✗
<b>Fire retardant version</b>	✓
<b>Connector contact plating</b>	50u gold plated
<b>Temperature</b>	-20°C to +75°C
<b>EAN</b>	7072662256203
<b>Certifications</b>	CE, RoHS

## Single packaging

<b>GTIN f-pak</b>	7090033548842
<b>Unit</b>	PCE
<b>Quantity</b>	1
<b>Height (cm)</b>	0,9
<b>Width (cm)</b>	12
<b>Length(cm)</b>	12
<b>Weight (kg)</b>	0,02
<b>Gross Weight (kg)</b>	0,02



## Dimensional Sketches



3	RJ45 PLUG: 8P8C 50U" GOLD PLATED TWO-PIECE PLUG; NICKEL PLATED SHIELDED.	
2	MOLDED: TRANSPARENT ASSEMBLY BOOT .	
1	CABLE: CAT6A F/UTP 4P/28AWG(1/0.32BC)+D(7/0.12TC)+AL/Mylar OD=Ø4.7±0.15mm LSZH JACKET.	
NO.	SPECIFICATION	QTY
	BOM LIST	

