



Network Cable Copper

LinkIT F/UTP Slim Cat.6a Blue 7.5m

AWG 28/1 | LSZH | Snagless | 4.7mm

Product number: SFTPC6A-0750M-BL

Product Description

LinkIT Patch Cat.6a cables stand out with their impressive 50-micron gold plating, providing exceptional corrosion protection and optimal signal transmission. Another important feature is support for the PoE++ (Power over Ethernet++) standard, enabling robust power delivery over network cables. This makes the device ideal for power-hungry applications such as cameras, access points, and other devices that require extra power.

The modular plug is equipped with a tangle-free lock that prevents annoying cable tangles and ensures a seamless connection experience. The cable comes with a high-quality clear plug, providing extra strength and protection to the cable ends and ensuring durability and reliability, even in demanding environments.

The cable's performance meets the requirements for Cat.6a (ANSI/TIA-568-C.2 and ISO 11801).

Main Specifications

Brand	LinkIT
Color	Blue
Length (m)	7,5
Category	Cat.6a Slim
Connector type 1	RJ-45 M (8P8C)
Connector type 2	RJ-45 M (8P8C)
Conductor material	Copper
Cable shielding	F/UTP - foiled shielding/unshielded twisted pairs
Conductor design	Solid



Extended Specifications

AWG wire size	28
Transmission speed	10Gbps
Frequency (Mhz)	500
Cable structure	4 x 2 AWG 28/1 (Solid)
Locking type	Snagless
NVP value	69%
Jacket material	LSZH
Anti-kink sleeve	Assembled
Pin Assignment	1-2;3-6;4-5;7-8
Cable Diameter (mm)	4.7
Halogenfree	✓
Oil resistant	✗
Fire retardant version	✓
Connector contact plating	50u gold plated
Temperature	-20°C to +75°C
EAN	7072662256319
Certifications	CE, RoHS

Single packaging

GTIN f-pak	7090033548578
Unit	PCE
Quantity	1
Height (cm)	6,1
Width (cm)	18,1
Length(cm)	18,1
Weight (kg)	0,21
Gross Weight (kg)	0,21

FMOM Documentation

Functional:

Cat.6a Copper Network Cable ensures high-speed data transmission for reliable connectivity in diverse networking environments, meeting the demands of robust applications.

Mechanical:

Durable construction, featuring high-quality copper conductors and insulation materials, provides longevity and resistance to physical wear. Connectors are designed for secure and stable connections.



Operational:

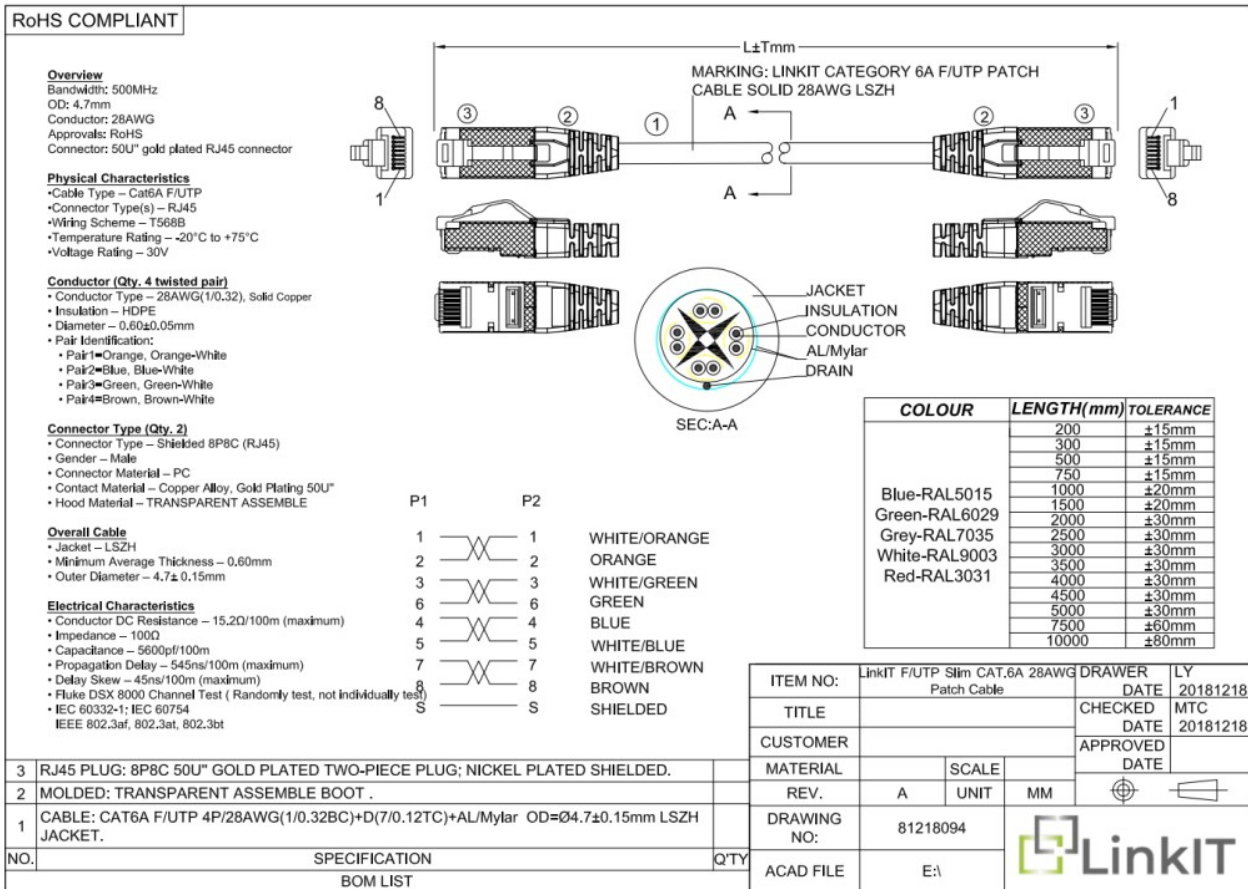
Compliant with industry standards, the cable operates effectively, delivering high data transfer rates with minimal interference. It remains efficient in various network scenarios.

Maintenance:

Regular inspections for cable integrity and connectors, along with monitoring environmental factors, are recommended for ongoing maintenance.



Dimensional Sketches



Additional Info

